

# AssetGather for Tracking Equipment in Labs

## RFID-based asset tracking and maintenance solutions



Labs, regardless of industry, have a pressing need to know what equipment they have and where they are. Further, tracking calibration and preventive maintenance of the equipment is critical to the functioning of the lab and the business. Regardless of the type of lab - electronic, biomedical, pharmaceutical, chemistry, physics and energy, the same requirements apply.

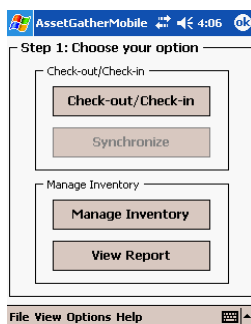
Labs may either own or lease this equipment. It is important that leased equipment and equipment that needs servicing be easily locatable. The success of these labs depends on maximizing asset utilization, while at the same time, minimizing the cost of ownership including with proper maintenance and calibration of the equipment.

### The AssetGather Solution :

AssetPulse's AssetGather for Lab Equipment provides organizations with a comprehensive, robust solution to meet their equipment tracking, preventive maintenance and calibration needs.

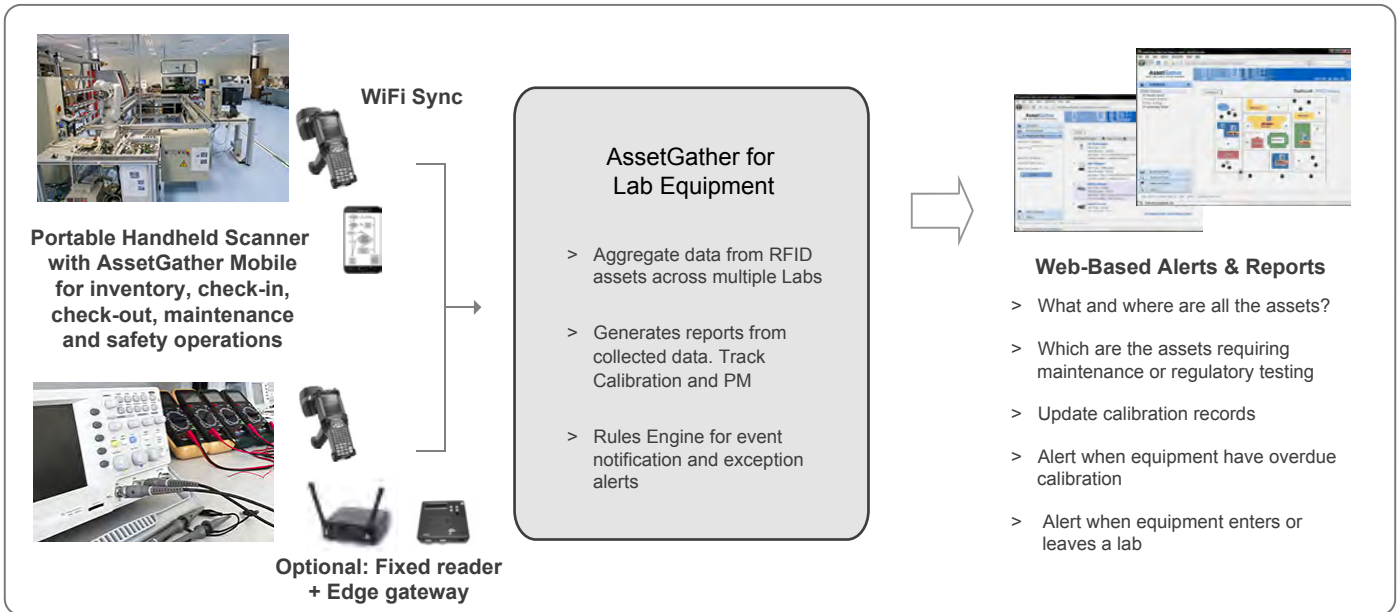
The solution consists of :

- A choice of RFID tags with different form factors that can be used on various sizes of equipment, whether they are standalone or situated in racks or lab benches. Tags can also be provided for special requirements including chemical resistance, temperature and humidity constraints.
- **Handheld or fixed RFID scanners** and smartphone / tablet based scanners which allow lab personnel to inventory and record data, efficiently and accurately. Handheld scanners can also be very effective in searching and locating equipment inside and outside labs.
- **AssetGather Server Software** with its centralized data repository, allows personnel to gain visibility into inventory obtain reports on past and future maintenance and calibration activities. This web based application with its user friendly interface also includes a robust rules engine. This allows users to configure sophisticated business process rules and alerts which includes notifications when equipment or prototypes are moved in and out of labs or when calibration is due.
- **AssetGather Mobile Software** running on RFID handheld readers and smartphones / tablets, helps personnel to perform their daily operations in an efficient and proactive manner. This application can be used to check-in and check-out assets to lab personnel on a temporary basis or to third party companies performing PM or calibration. AssetGather Mobile can also be used to perform 'integrity scans' to ensure the correct sub-components make up a system and to detect if anything has been added or removed, thereby affecting the 'integrity' of the system.



Optionally, fixed RFID readers can be deployed at one or more of the lab entrances or exits which would allow automatic inventorying and real-time tracking of all the equipment present at the site. This real-time data can be sent to the central AssetGather system which can simultaneously aggregate data from handheld and fixed RFID readers from multiple locations, even if the RFID technology used is different (for example Active RFID or Passive RFID).

**AssetGather provides fast inventory, check-in, check-out and reconciliation functionality using portable handheld RFID scanners**



### Features and Benefits

AssetGather is designed to be easily deployed so that you can realize the following benefits immediately

- Improved asset visibility - Rapid Inventory, check-in, check-out and reconciliation**  
 Asset data can be collected from many rooms or labs and synchronized to a central server. Wall-to-wall audits can be completed quickly and accurately. Achieve accurate asset visibility and improved equipment utilization. Minimize unnecessary equipment purchases or leases.
- Asset Maintenance**  
 Track maintenance or calibration of all your assets accurately. Be proactively notified of upcoming maintenance and be alerted when it is overdue. Obtain historical maintenance records.
- Secure access from anywhere**  
 The web-based interface of AssetGather enables secure access from any web browser. Map layout, graphs and reports are customizable. Reports can be exported to MS Excel and other EAM systems.
- Configurable Rules based alerting**  
 Receive email alerts when equipment is removed from a lab or when calibration is coming due.

### System Components

AssetGather for Lab Equipments provides and integrates with the following components

- RFID Tags**  
 Passive EPC Class 1, Gen 2 RFID Tags or Active RFID tags. AssetPulse provides tag selection consultation service, to provide optimal tags for your use case.
- RFID Scanner with AssetGather Mobile Software**  
 Handheld portable Passive or Active RFID readers, smartphone or tablets with AssetGather Mobile software. Data is synchronized with Server either wirelessly or via USB connection
- AssetGather Server Software**  
 Server Configuration : Minimum of 2GB and 30 GB of disk space,  
 Supported Operating systems : Microsoft Windows Vista or higher and Linux. Server software is also provided as a subscription service.
- Browser Support**  
 AssetGather reports can be displayed on any Internet Explorer, Chrome or Firefox Browser

### Contact Us

AssetPulse Inc.  
 1340 S. De Anza Blvd.  
 Suite #106  
 San Jose, CA 95129

Phone: 408.872.3104  
 info@assetpulse.com  
[www.assetpulse.com](http://www.assetpulse.com)

### Learn More

To learn more about our asset tracking solutions, please contact us to schedule a demo or a free consultation session.