

# AssetGather for IT Asset Tracking

## RFID-Based Solution for Tracking Laptops and IT Assets



**IT Equipment** are an important tool and a common fixture in virtually every company these days. As a result IT Assets end up with all kinds of business critical and even confidential information. IT equipment can either be distributed throughout an organization or consolidated in a datacenter. The loss of IT equipment can hurt an organization in many ways - not just financially. Average estimates of the actual financial losses an organization experiences when IT equipment and its data are stolen vary widely from as little as a few thousand dollars to as much as \$5 million or more. Apart from replacement costs, there may likely be an impact in terms of loss of business, loss of corporate secrets and legal liability from the loss of confidential client information amongst others.

### Key Highlights

- ▶ Web-based solution for tracking RFID-tagged IT assets including laptops
- ▶ RFID Vendor Neutral - Not dependent on any specific RFID tag or reader vendor. Supports passive, semi-passive and active RFID infrastructureslate
- ▶ Easy to configure and use rich web interface includes, map, graph and list views
- ▶ Generates real-time alerts on exceptions in business workflow. Delivers alerts through email
- ▶ Customized RFID tags optimized for variety of IT and office equipments
- ▶ Scalable, Web and Java-based enterprise-class architecture

### The AssetGather Solution

AssetGather is a web-based asset tracking solution that can help keep track of critical IT assets such as laptops by collecting and processing data from them in real-time using RFID tags.

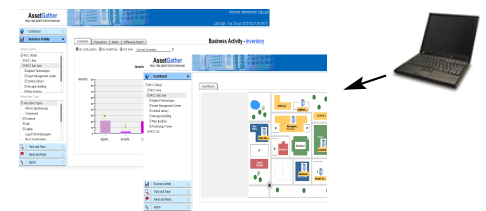
The AssetGather solution works with a variety of RFID tags including passive, semi-passive and active tags. The exact type of tag used depends on the asset being tagged and the specific customer requirements. Once the assets have been tagged with an appropriate RFID tag, the laptop or IT asset movement can be tracked using RFID reader at portals that are installed strategically at entry or exit points in the coverage area of interest.

AssetGather is able to handle data from multiple readers that may be located at multiple sites. The raw data from all these readers and sites is sent to a centrally located AssetGather server. The central server collates asset event information and stores it in an application that is accessible from any web browser within the organization. The application can be used to view reports or to setup custom alerts that will be delivered by E-mail when an exception is triggered. The application allows assets to be easily located using a search screen and can also integrate with cameras, alarms or other sensors to enable comprehensive IT asset tracking.

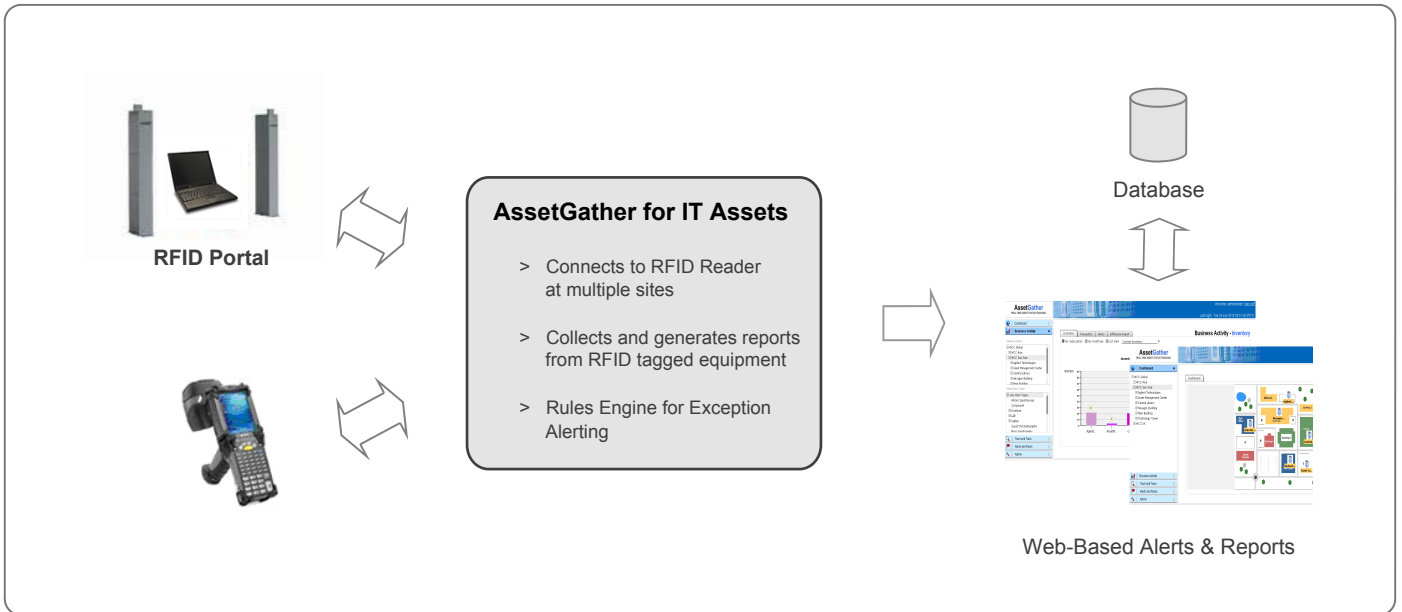
### The AssetGather Advantage

IT Asset tracking with AssetGather will immediately deliver the following benefits

- Real-Time Audit and Traceability
- Improved security of critical assets and protection of Intellectual Property
- Ability of employees and auditors to quickly locate specific assets saving time and effort
- Generate utilization and trend reports for better planning for capital expenditure



### Track IT Assets with AssetGather using Web-Based Alerts and Reports



**AssetGather enables an up-to-date centralized view of your IT Assets**

AssetGather ensures that you always have up-to-date information about your critical IT assets like laptops that may be spread out across various locations. It collects event data about those assets and provides reporting and alerting through a dynamic, easy-to-use web application.

**Key Features**

AssetGather is a web-based software that is customizable and includes

- **Time stamped Logging, Graphical Dashboard and Reports**  
Configurable dashboards and reports including map, graph and list views
- **Direction Sensing**  
Distinguishes entry and exit events
- **Configurable Rules-Based Alerting**
  - **Perimeter Alerts:** Alert when an asset goes outside its permitted "home" zone
  - **Delinquency Alert:** An alert is raised when an asset is not seen back within configured time
  - **Alert on Serial # :** Take action when a specific asset is seen
- **Asset Search**  
Easily locate assets using proximity search feature of AssetGather Mobile
- **Support for Device Integration**  
Configurable for GPIO sensors like buzzers, stack-lights
- **Reader Heartbeat Monitoring**  
Displays current status of readers

**System Components**

AssetGather is tested and supported on the following configurations

- **Hardware**  
AssetGather can work on any server configuration with a minimum of 2GB RAM and 20GB of Disk Space.
- **Operating Systems**  
Linux, Microsoft Windows 7 & above
- **Browser Support**  
Internet Explorer 11 or Chrome or Firefox Browser
- **RFID Tags and Readers**  
AssetGather solution is not tied to any particular RFID Reader/tag type or vendor and is capable of working with various passive, semi-passive and active RFID infrastructures.

**Contact Us**

**AssetPulse LLC.**  
1340 S. De Anza Blvd.  
Suite #106  
San Jose, CA 95129

Phone: 408.872.3104  
[info@assetpulse.com](mailto:info@assetpulse.com)  
[www.assetpulse.com](http://www.assetpulse.com)

To learn more about the AssetGather solution for RFID-enabled tracking of critical IT assets such as laptops, please contact us to schedule a demo or a free consultation.